



SingHealth Duke-NUS
Lung Centre

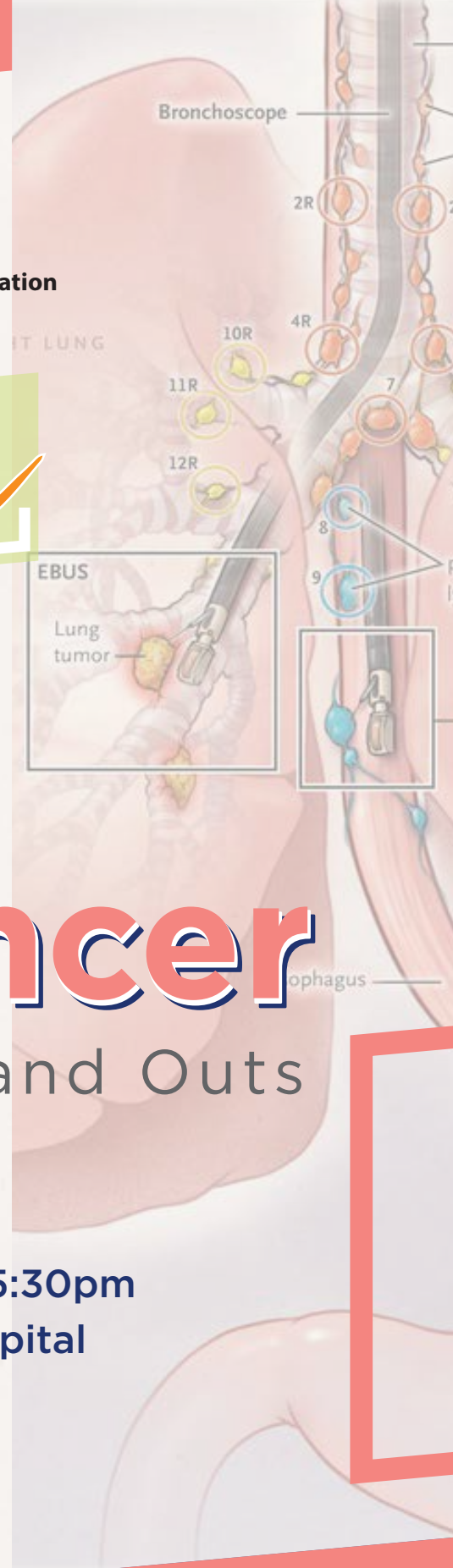
EDUCATION
Thematic
SERIES

Lung Cancer

The Ins and Outs

2nd – 4th August 2019 | 8:30am - 5:30pm

Academia, Singapore General Hospital
20 College Rd, Singapore 169856



Introduction

A concise review course that highlights all you need to know from A to Z in Lung Cancer, including hands-on skills on EBUS-TBNA taught by international experts.

Course Highlights

- A rational and stepwise approach to Lung Cancer, from workup to treatment.
- Dedicated radiology and pathology lectures with a focus on Lung Cancer.
- Systematic methodology in mediastinal staging using EBUS, with hands-on guidance by international experts in small groups.
- Latest updates in the management of Lung Cancer

Target Audience

Trainee or Practicing Specialists in Pulmonology or Thoracic Oncology

Registration

Course Fee (*Inclusive of GST*)

Practicing Physicians **SGD 642**

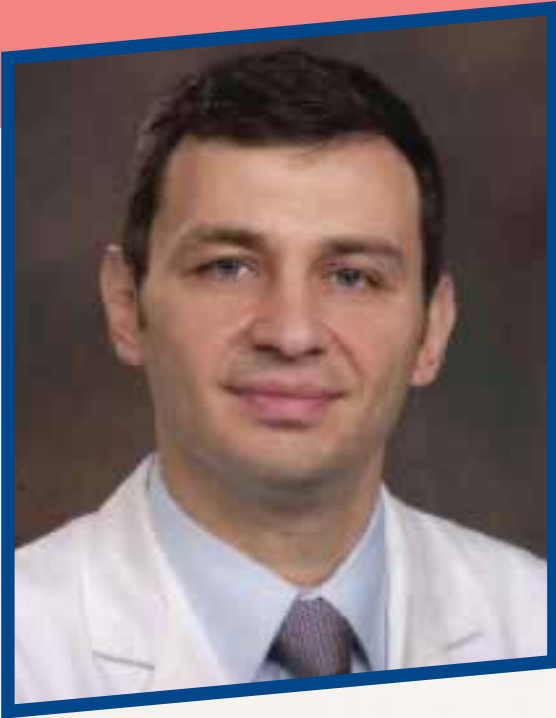
Trainee Physicians **SGD 428**

For registration, email your name, institution, department and contact details to

sims.sssc@singhealth.com.sg

Guest Faculty

Associate Professor Momen Mohammed Wahidi, MD (USA)



Dr Wahidi is an Associate Professor of Medicine of Duke University School of Medicine in the United States of America and is a member of the Duke Cancer Institute. He is also the director of the Interventional Pulmonology program at the Duke University Medical Centre.

His clinical interests are in interventional pulmonology and lung cancer where he has published extensively in international journals and received grants particularly in the fields of electromagnetic bronchoscopic and electromagnetic

transthoracic approaches of pulmonary nodules, such as the ARCHIMEDES system, the EAST 2 and NAVIGATE trials. He also participated in the development of the Annals of American Thoracic Society Clinical Practice Guideline for management of malignant pleural effusions.

Dr Wahidi serves on the steering committee of the interventional/chest diagnostic network of the American College of Chest Physicians (ACCP) and on the board of directors of the American Association of Bronchology and Interventional Pulmonology. He is also the current ACCP governor for North Carolina.

Guest Faculty

Associate Professor Septimiu Dan Murgu, MD (USA)



Dr Murgu is an Associate Professor of Medicine of the University of Chicago Medicine in the United States of America, where he is the Program Director of the Interventional Pulmonology Fellowship.

His clinical interests include interventional pulmonology with the specific expertise in minimally invasive diagnostic and therapeutic bronchoscopic and pleural procedures for the the management of lung cancer and central airway disorders. This interest is also seen

in research work, where he is actively involved in bronchoscopy and lung cancer education projects.

Dr Murgu is a member of the International Association for the Study of Lung Cancer, the American College of Chest Physicians, the American Association of Bronchology, the Society of Critical Care Medicine and the World Association for Bronchology. Similarly, as a faculty member of Bronchoscopy International, he devotes time to training bronchoscopists of all nations.

Registration Form

Name _____
(Name indicated above will be reflected in the certificate upon course completion)

Institution _____

Department _____

Designation/Residency Year _____

MCR No _____

Address _____

Tel _____ E-mail _____

Payment Method

Credit/ Debit card payment at:
20 College Road, Academia, Level 2,
Education Office, Singapore 169856

Cheque/Bank draft to be made payable to
“**Singapore Health Services PteLtd**”.
(Please indicate “Lung Cancer Thematic Series,
Name, Assignment code: **EBUS1901**, Cost
Centre: **22183**” on the reverse side of the
cheque)

Please send your completed form
with payment to:
SIMS-Surgical Skills (Attn: EBUS Secretariat)
Singapore Health Services PteLtd
20 College Road, Academia, Level 2,
Education Office Singapore 169856

Location

Academia (20 College Road, Singapore 169856)



Cancellation Policy

Any cancellation or replacement must be conveyed to the Organiser in writing. A cancellation charge of 50% of the fee will be levied if the cancellation is made before the closing date. There will be no fee refund if the cancellation is made thereafter.

The Organiser reserves the right to cancel the workshop and fully refund the participants should unforeseen circumstances necessitate it.