



KK Women's and  
Children's Hospital  
SingHealth

# Telehealth for Speech Language Therapy Service

Lydea Gn  
Senior Speech Therapist  
Speech Language Therapy Service,  
KKH Rehabilitation Centre  
9 Mar 2021



1



# The Progression of Telehealth for Speech Language Therapy

Patient recruitment  
and running  
telehealth sessions

- Telehealth@Rehab
- Change in VC software : Vidyo → Zoom

End 2016

2018

2020

Troubleshooting and refinement of workflows

2017

2019

## Commencement of pilot project:

- Defined patient group and selection criteria
- In-house trial calls

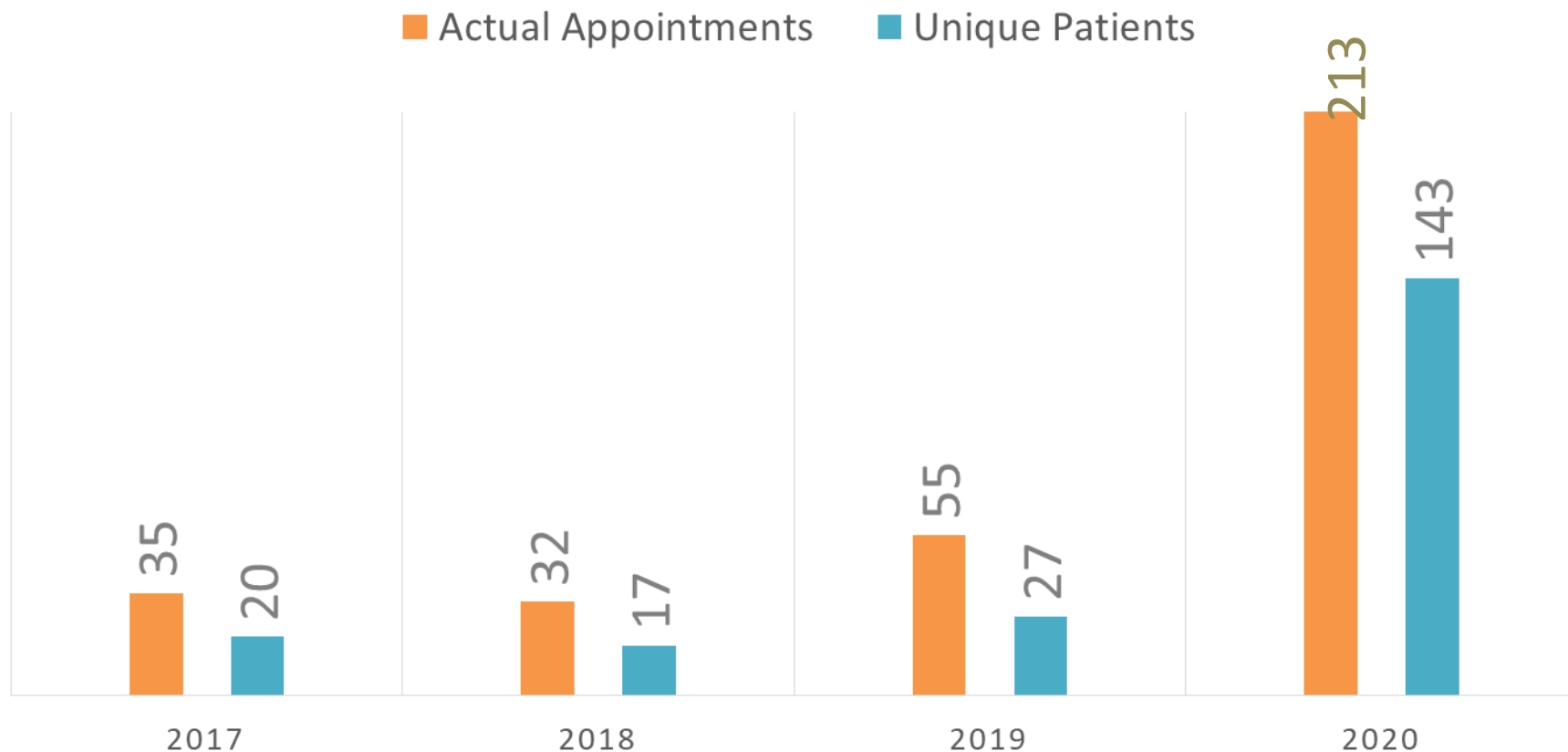
- Expansion to other clinical domains
- Telehealth@WT Lvl 1

- Joint clinic with occupational therapists
- Breakout rooms and dedicated telehealth templates
- Telehealth@KKH-NHC
- Admin support, SMS reminders

INTERNET  
SEPARATION

Restricted, Sensitive (Normal)

# Telehealth sessions



No. of speech therapists who conducted telehealth sessions:



Restricted, Sensitive (Normal)

# Number of clinics running VC



**2017:** Stuttering, speech, *infant feeding*

**2018-2019:** Stuttering, speech, school age language, early language, social skills, oromotor

**2020:** same as 2018-2019 as well as inpatient follow up, and fussy eating (trans-D clinic with occupational therapist)

Restricted, Sensitive (Normal)

# Changing the way we do therapy



Main page  
Contents  
Featured content  
Current events  
Random article  
Donate to Wikipedia  
Wikipedia store

Interaction  
Help  
About Wikipedia  
Community portal  
Recent changes  
Contact page

Tools  
What links here  
Related changes  
Upload file  
Special pages  
Permanent link  
Page information  
Wikidata item  
Cite this page

Print/export  
Create a book  
Download as PDF  
Printable version

In other projects

Article Talk

## Minecraft

From Wikipedia, the free encyclopedia

For other uses, see *Minecraft* (disambiguation).

**Minecraft** is a sandbox video game created and designed by Swedish game designer Markus "Notch" Persson, and later fully developed and published by Mojang. The creative and building aspects of Minecraft allow players to build with a variety of different cubes in a 3D procedurally generated world. Other activities in the game include exploration, resource gathering, crafting, and combat.

Multiple gameplay modes are available, including unlimited resources to build with and the ability to move throughout a world without being affected and assets for the game.

Minecraft received praise from critics and has won in popularizing the game. It has also been used in education. By early 2018, over 144 million copies had been sold by Mojang and the Minecraft intellectual property.

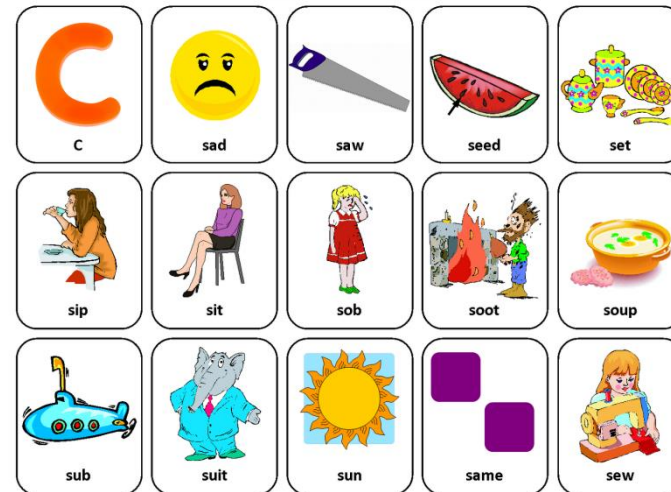
*Minecraft: Story Mode*

Contents [hide]

- Gameplay
  - Survival mode
  - Creative mode
  - Adventure mode
  - Spectator mode
  - Multiplayer
- Development
  - Soundtrack
- Release
  - Personal computer versions
  - Console versions



One-Syllable Initial /s/ Picture Cards



One-Syllable Initial /s/ - Picture Cards Page 1 Front

Created by Dula M.A. CCC-SLP ©2012 [www.totallytrying.blogspot.com](http://www.totallytrying.blogspot.com)

Images ©2012 JupiterImages Corporation

Restricted, Sensitive (Normal)



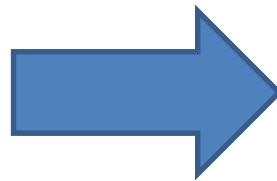
# Changing the way we think of therapy



Direct  
intervention



Working  
with and  
through  
caregivers in  
the child's  
natural  
environment



Restricted, Sensitive (Normal)

# Obstacles and how we managed them

Initial phase

**Manpower limitations**

Protected time for therapists to perform telehealth duties

Initial phase

**Caregivers' and therapists' perceptions**

Review feedback, run in-services and provide on-site support

**Infrastructure constraints**

Ongoing collaboration with MICT, IT and admin support

Restricted, Sensitive (Normal)

# Future wishlists



## **Systems integration**

Integration of various systems for Telehealth appointments to be conducted more seamlessly

## **Feedback form**

Automated links sent to caregivers after the session

## **E-consent**

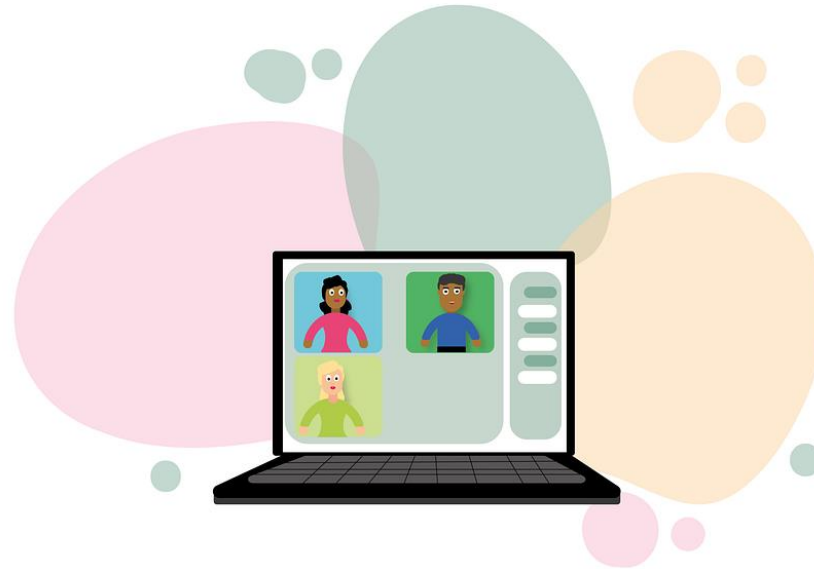
To reduce backend admin work

## **Health app reminders**

To indicate telehealth sessions to reduce confusion

Restricted, Sensitive (Normal)





**Thank You!**